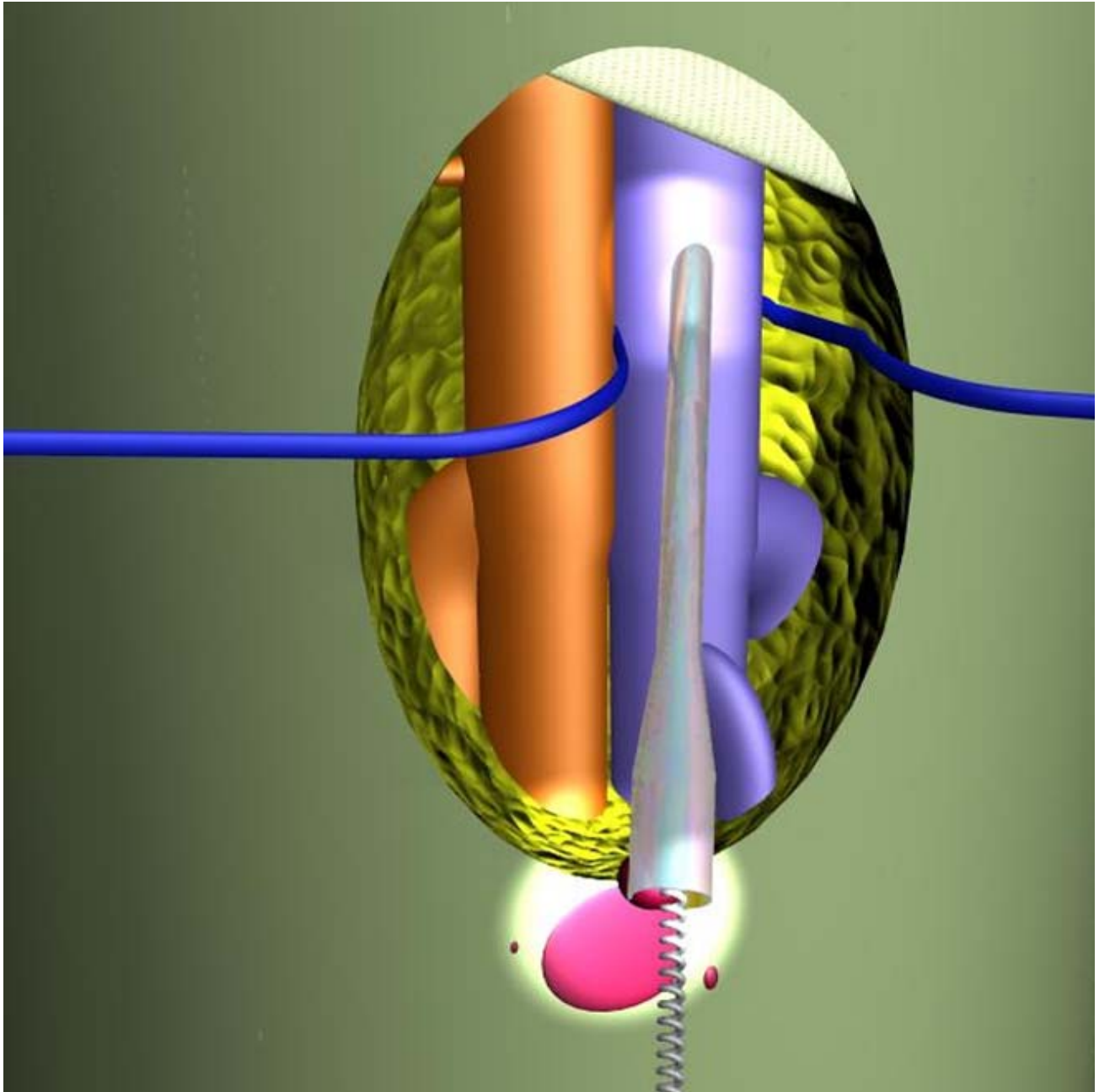


# *The smart canula<sup>®</sup> Dilator Set*

---

Next generation design for superior performance



The *smart canula<sup>®</sup> Dilator Set* is designed for percutaneous or semi-open vascular access with diameters from 8F to 24F

No 1609

---

[www.smartcanula.com](http://www.smartcanula.com)

Ordering information for typical *Smartcanula® Dilator Set* configurations



| Catalog Numbers*          | Set Content   | Units Number | Platform Diameter Inch | Size Length cm | Size Diameter F | Configuration |
|---------------------------|---------------|--------------|------------------------|----------------|-----------------|---------------|
| D8F-D24F J3.5 100 035 G18 | Hollow needle | 1            | .035                   | 8              |                 | 18 G          |
|                           | Guide wire    | 1            | .035                   | 100 (-200)     |                 | J3.5 (- 7.5)  |
|                           | Dilator       | 1            | .035                   |                | 8/10F           | Step-tip      |
|                           | Dilator       | 1            | .035                   |                | 10/12F          | Step-tip      |
|                           | Dilator       | 1            | .035                   |                | 14/16F          | Step-tip      |
|                           | Dilator       | 1            | .035                   |                | 18/20F          | Step-tip      |
|                           | Dilator       | 1            | .035                   |                | 22/24F          | Step-tip      |

For more information, contact your local *smart canula®* sales representative

\*ordering numbers include *smartcanula®* specific mandrel for collapsed insertion

device specifications may change at any time without prior notice